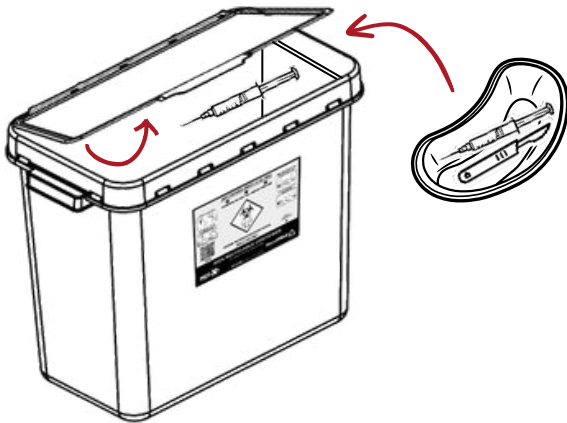


Med-X Usage Instructions For Sharps Container Models MXL15 | MXL23 | MXL33

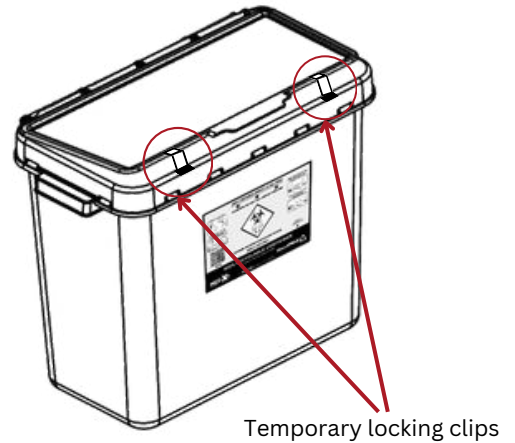
1. Usage



Lift lid and drop sharp(s) horizontally into the container, or use kidney dish to empty sharps into container.

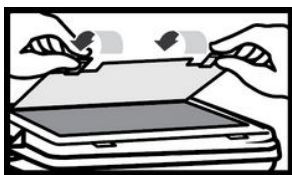
Return lid to temporary closure position.

2. Temporary Closure



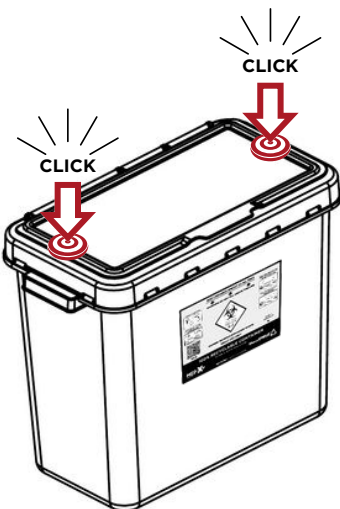
For temporary closure, fold temporary locking clips forward into slots on front of the container to engage.

3. Permanent Closure

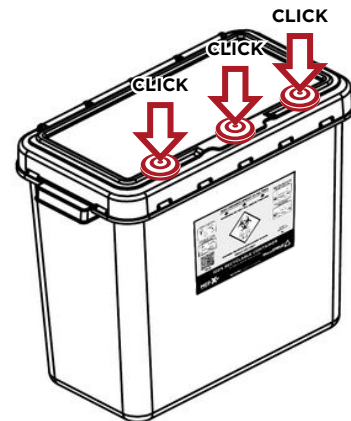


3.1
Once container is full, lift lid & fold temporary locking clips backwards.

3.3
Repeat process for 3 front clips to permanently lock container.



3.2
Press firmly down on 2 key points either side of lid to secure locking clips.



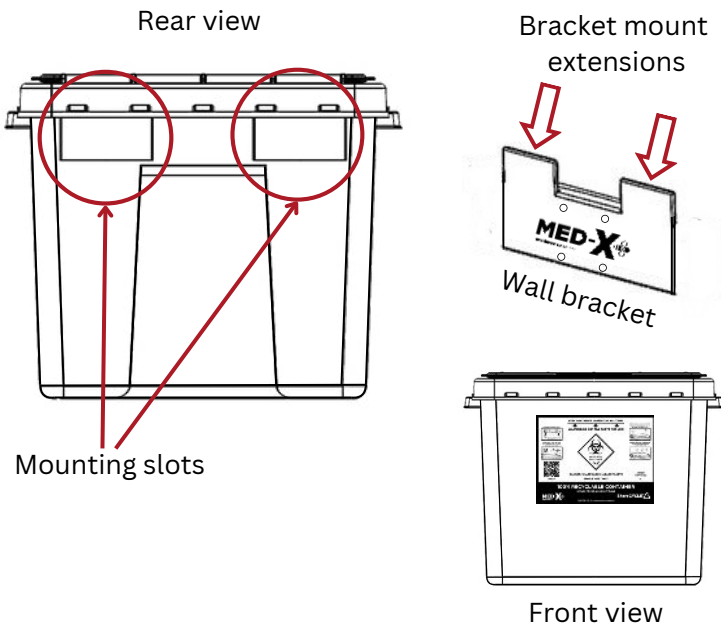
The container is now ready to be removed from the wall bracket.





Med-X Wall Bracket/Trolley Mounting Instructions For Sharps Container Models MXL15 | MXL23 | MXL33

1. Wall/Trolley Mounting

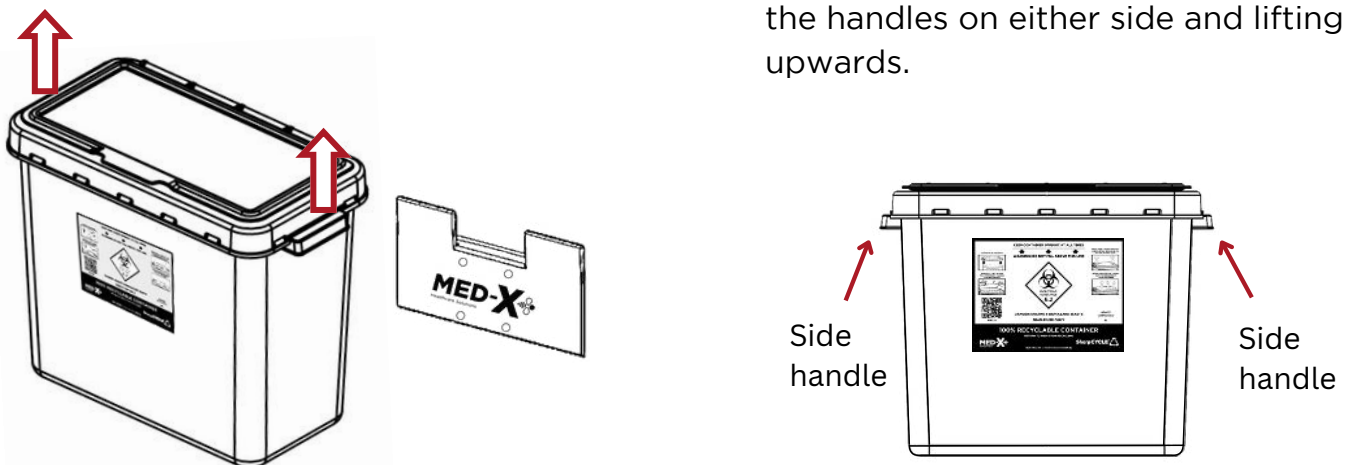


Remove cardboard supports from the mounting slots at the back of the container.

Lift and hold container up to the wall bracket, while lining up the rear mounting slots to just above the bracket mount extensions.

Slide the container downwards ensuring the bracket mount extensions are firmly engaged in the container's mounting slots.

2. Removal From Bracket



Remove the container from the wall bracket by holding the container by the handles on either side and lifting upwards.

